

Laptop Setup Instructions (USB Dock)

1. Get ready for installation, start by unpacking the box and identifying the components.

What's in the box?

- Laptop
- Laptop Power Cord
- Mouse *
- Keyboard *
- Headset *
- Docking Station Monitor (default), or Standalone Docking Station *
- Monitor and connectors *

* May not be included with a PC refresh

2. Plug everything in.

Now it is time to get your laptop hooked up. If a docking station monitor or standalone docking station was included, you will connect the cables to the docking station. If a docking station was NOT included, then you will connect the cables directly to the laptop.

NOTE: See [Appendix A](#) for docking station diagrams.

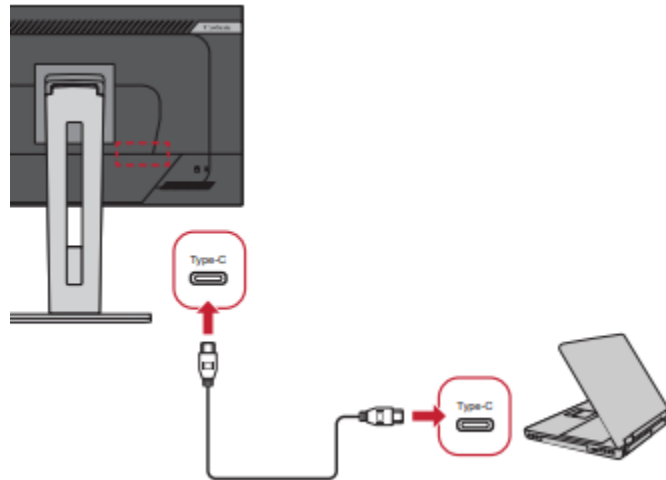
- The mouse, keyboard and headset have a USB connector. These can plug into any available USB port on your laptop or docking station if supplied.
- If you have a docking monitor or standalone docking station, they will connect via USB-C cable between your laptop and the monitor or dock, this will charge your system along with providing data and video links your normal charger should not be needed.
- Connect the ethernet cat5e cable to the docking station/monitor or USB-C or ethernet adapter** (alternative) and to your home internet router.



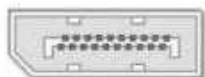
**** IMPORTANT NOTE:** If the USB-C to ethernet adapter is included. For first connection plug the ethernet cable into ethernet adapter connected to the USB-C port on the laptop, Do not plug it into the dock. After completing this setup, and powering on the system, the dock will be enabled. Once that has been completed, you can move the ethernet cable to the dock and no adapter is needed.



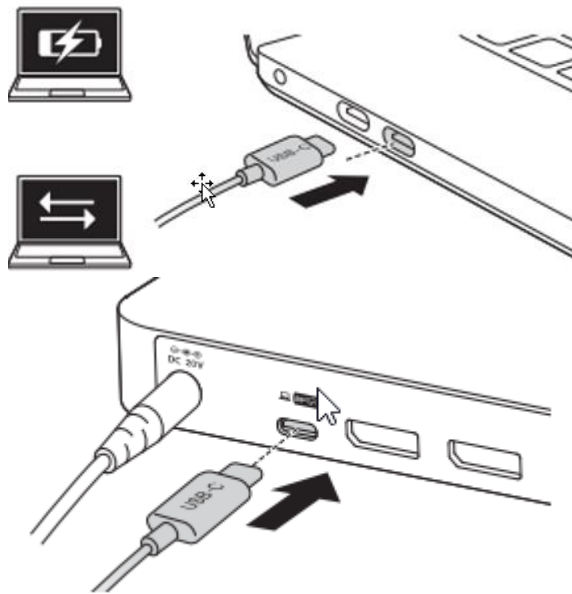
- Connect the monitor power cord to the monitor and to an electrical outlet.
- Connect the docking station monitor to the laptop.



- If using the docking monitor to connect to an additional monitor a DisplayPort cable is used to daisy chain the two monitors together, utilizing the DP out connection port from the back of your docking monitor. See [Appendix B](#)
 - DisplayPort connectors are rectangular with a notch on one corner.



- If using the stand-alone dock, connect the docking station power cord to the dock and to an electrical outlet.
- Connect the stand-alone docking station to the laptop.



- If using the Standalone dock, you will connect all the monitor connections directly into the dock. See [Appendix A](#)
- If not using a dock, connect the laptop power cord to the laptop power port and to an electrical outlet.
- All other connection in a non-dock setup will need to be connected to the system directly or dongles (ordered separately)

3. Configure your workspace for comfort and productivity.

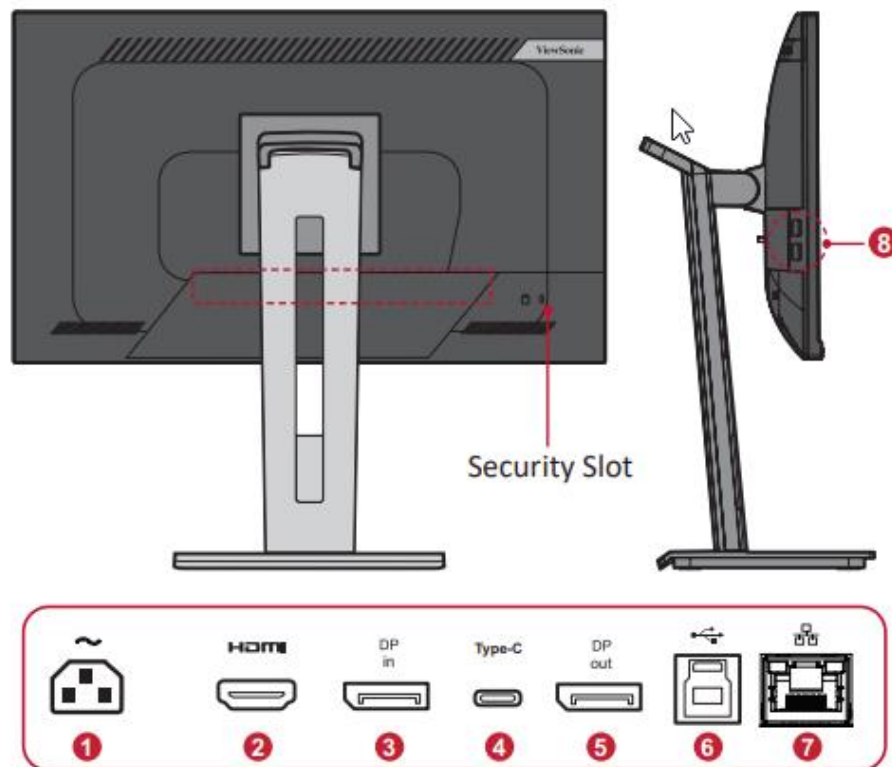


4. The system is now ready to be turned on.
 - Press the power button to turn on the laptop.
 - Press the power button on the monitor to turn it on.

For assistance with this process, call the Service Desk at (877) 828-4357 or visit <https://mysupportdesk.service-now.com/esc> to chat with a representative.

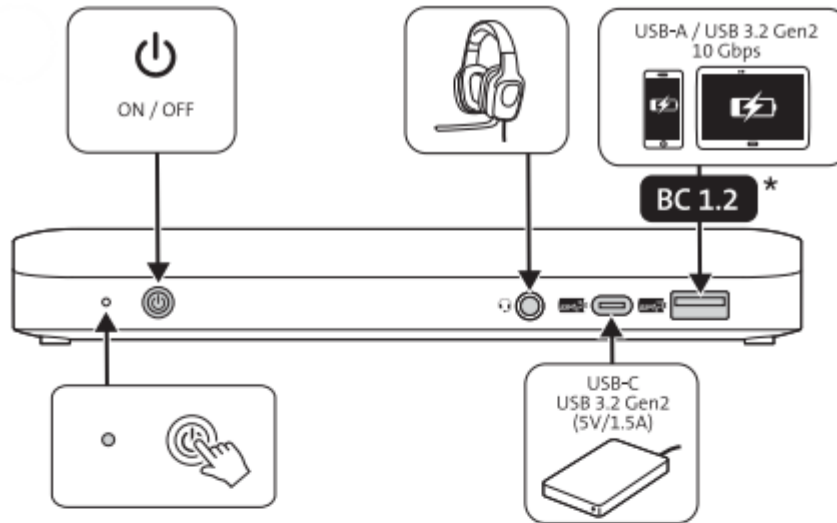
Appendix A: Docking Station Diagrams

Docking Monitor

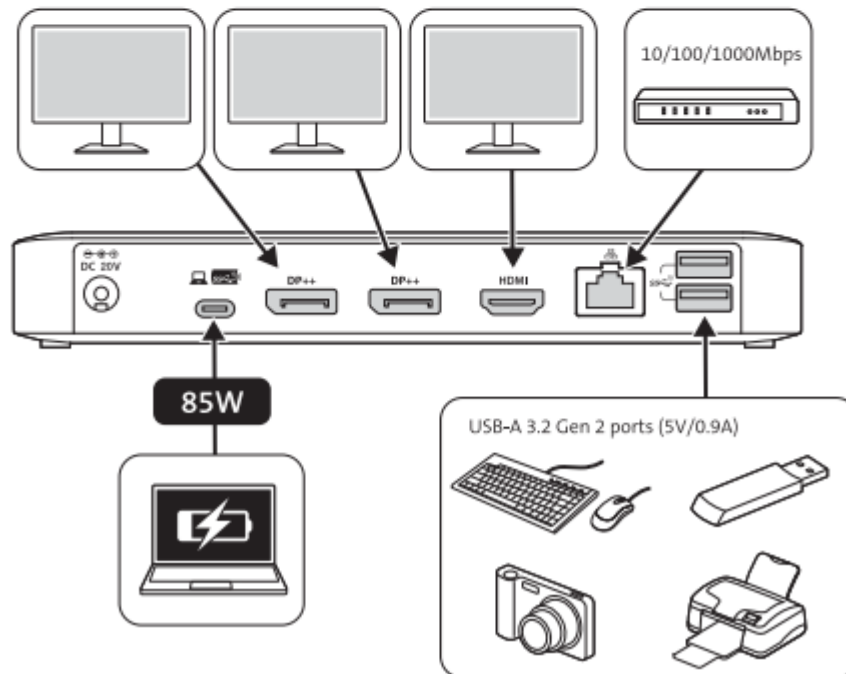


- | | | | |
|--------------------|-----------------|-------------------|-------------------|
| 1. AC IN | 2. HDMI | 3. DisplayPort In | 4. USB Type-C |
| 5. DisplayPort Out | 6. USB Upstream | 7. LAN (RJ45) | 8. USB Downstream |

Stand-alone dock

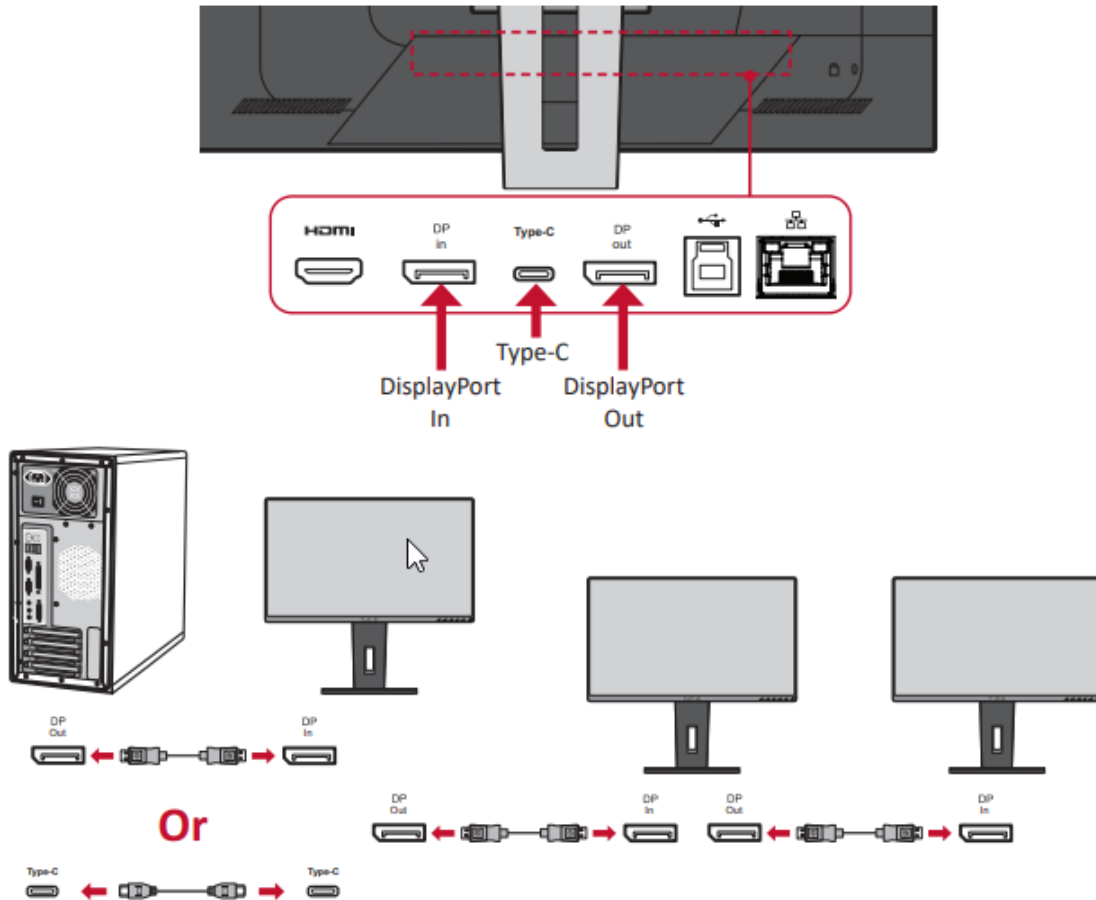


* USB Battery Charging 1.2 - compliant devices (up to 5V/ 1.5A)



Appendix B: Daisy Chain Diagram

NOTE: Your graphics card compatibility will determine the number of monitors.



NOTE:

- The max resolution is 1920 x 1080.
- DisplayPort 1.2 MST must be turned on in the **Setup Menu** in the OSD Menu to do daisy chaining.
- If the input source changes to HDMI, DisplayPort 1.2 MST will turn off automatically.